

Land surface Carbon Constellation project

Thomas Kaminski, Wolfgang Knorr, Michael Voßbeck, Mathew Williams, Timothy Green, Luke Smallman, Marko Scholze, Tristan Quaife, Tuula Aalto, Tea Thum, Sönke Zaehle, Mike Schwank, Mika Aurela, Martin Barbier, Santiago Belda Palazón, Alexandre Bouvet, Emanuel Bueechi, Wouter Dorigo, Tarek S. El-Madany, Tiana Hammer, Marika Honkanen, Derek Houtz, Francois Jonard, Yann H. Kerr, Anna Kontu, Juha Lemmetyinen, Hannakaisa Lindqvist, Arnaud Mialon, Mirco Migliavacca, Leander Möisinger, Pablo Morcillo, Susan Steele-Dunne, Shaun Quegan, Peter Rayner, Pablo Reyez Muñoz, Nemesio Rodriguez Fernandez, Jochem Verrelst, Mariette Vreugdenhil, Matthias Drusch, and Dirk Schuettemeyer

LPS 22, Bonn



Objectives of the project

Investigate the **terrestrial biosphere's net ecosystem exchange** – photosynthetic CO₂ uptake minus respiratory CO₂ release – **response to climatic drivers** by means of combining a process-based model with a **wide range of observations (in-situ and remotely sensed) on local and regional scale** around two (three) sites (Sodankyla, Majadas, Reusel).

For this we will:

- Generate a **community land surface model for its application in a data assimilation framework**
- Acquire and analyse **EO and campaign data sets**

Overview of the LCC project

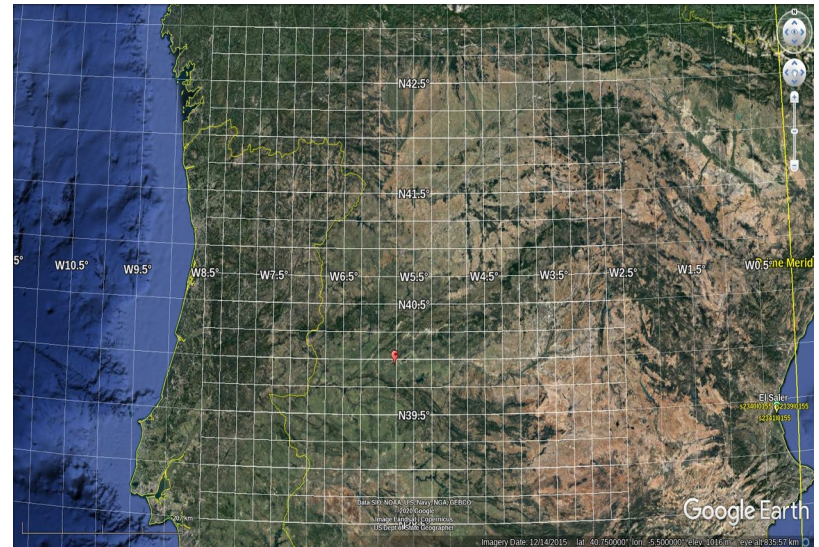
- Kicked off Oct 2020
- 13 partners
- 30 months duration
- <https://lcc.inversion-lab.com>

Broad range of activities:

1. EO data → Poster N. Rodriguez-Fernandez et al. (65055, Monday)
2. Field activities → Poster J. Lemmetyinen et al. (66971, today)
3. Model and observation operators
4. Data assimilation

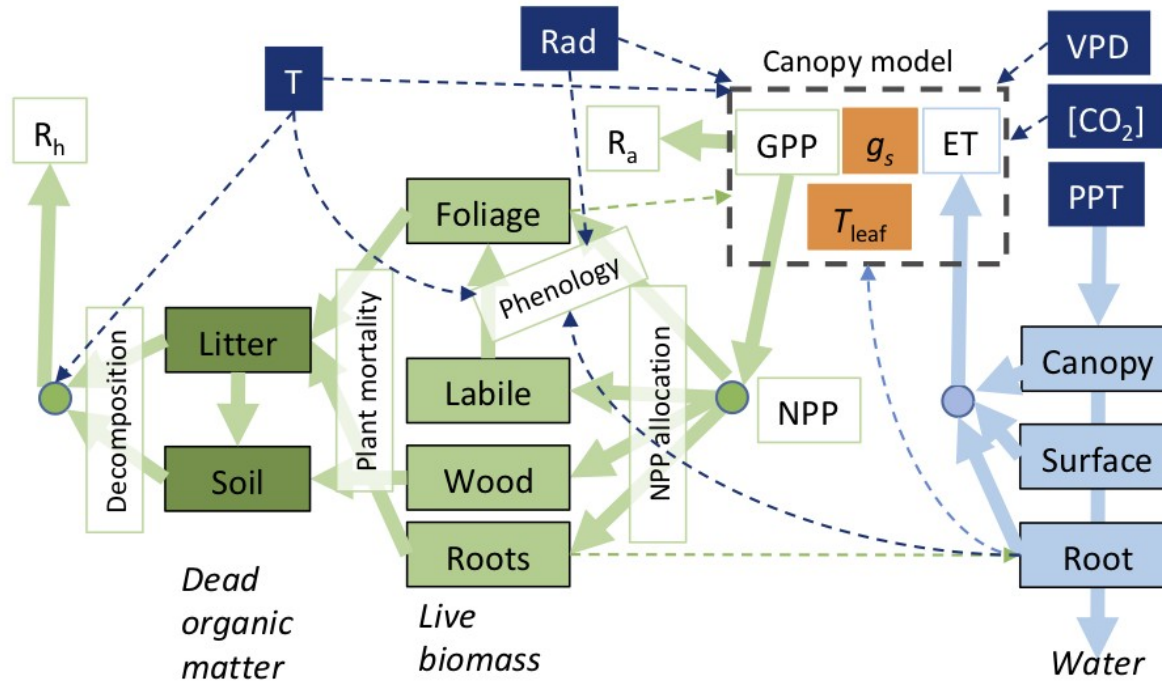
Modelling at local and regional scales

- Demonstration of synergistic use of observations at local and regional scale
- Regional scale: 500 km x 500 km area around the sites at 0.25 deg resolution (Sodankyla & Majadas)

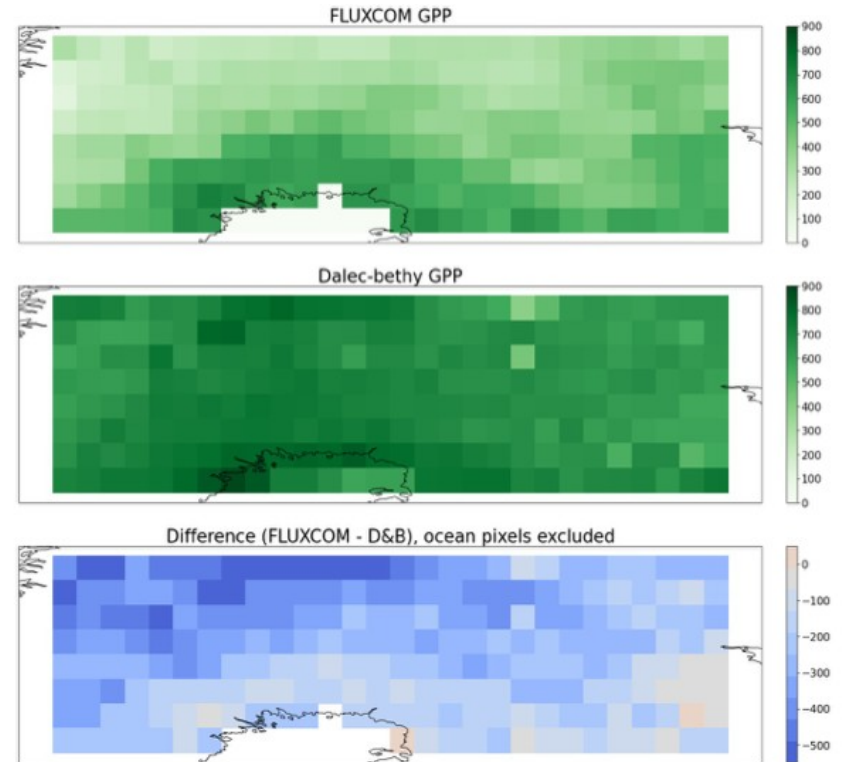
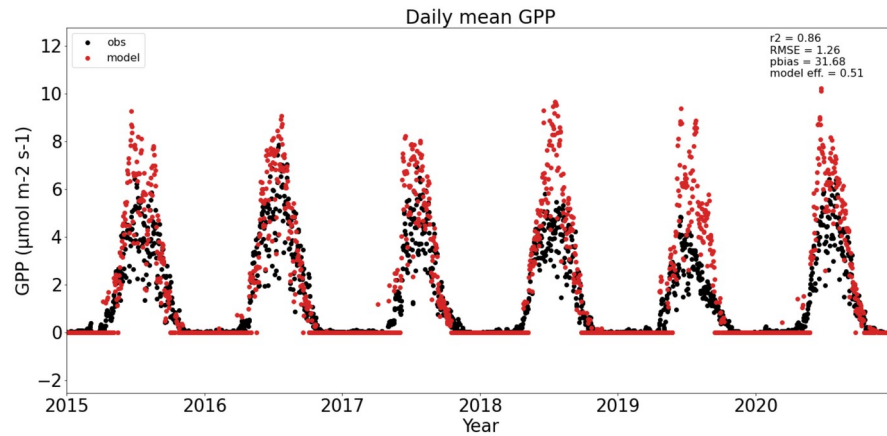


Community land surface model: D&B model

Based on a coupling of DALEC and BETHY

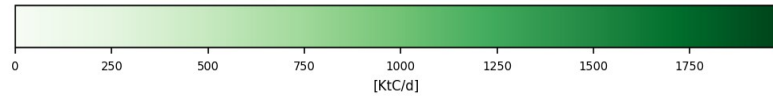
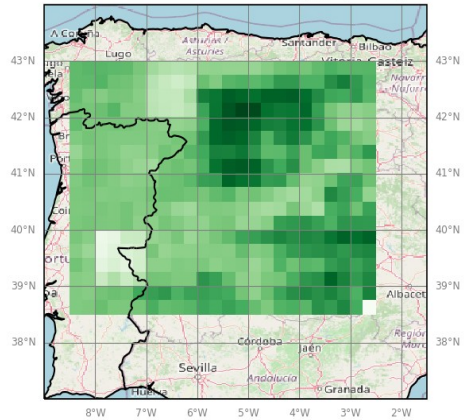


GPP at Sodankylä

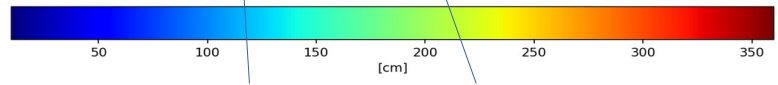
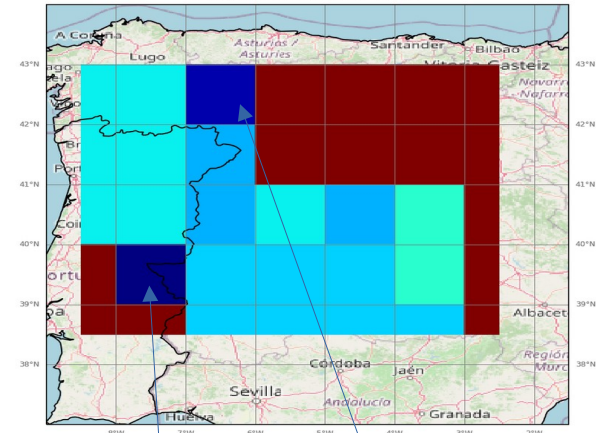


Soil depth and GPP at Majadas

D&B simulated annual-gpp (2018)



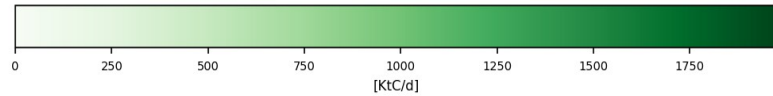
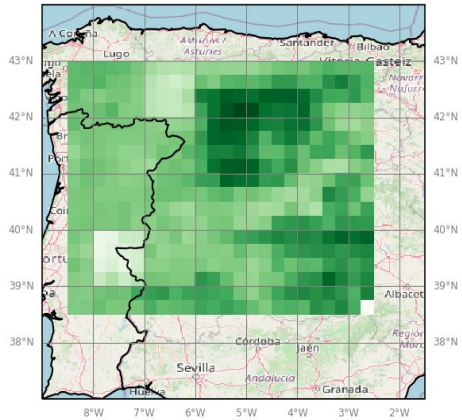
9.000W:1.500Wx37.000N-44.000N soil profile depth [cm]
min/mean/max = 1.0000E+01/2.0291E+02/3.6000E+02



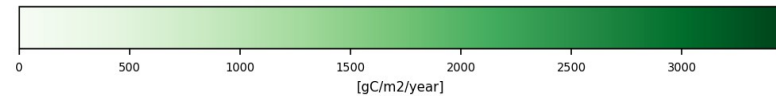
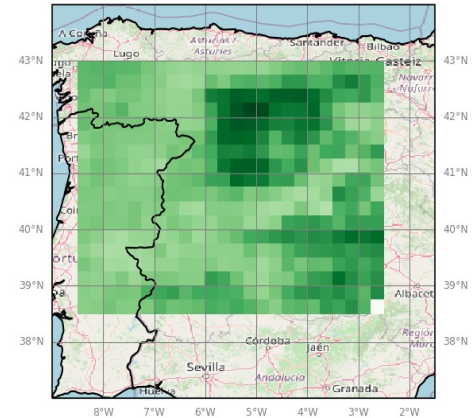
10 cm 25 cm

Soil depth and GPP at Majadas

D&B simulated annual-gpp (2018)



D&B simulated annual-gpp (2018)



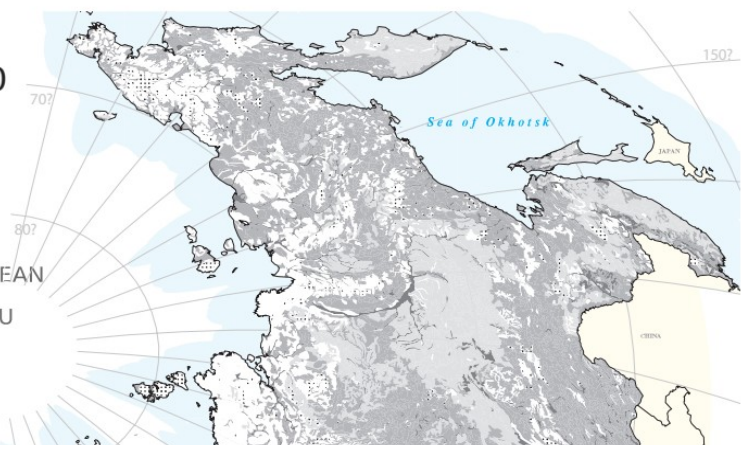
With soil depth
floor of 115 cm

SOIL GEOGRAPHICAL DATABASE OF EURASIA

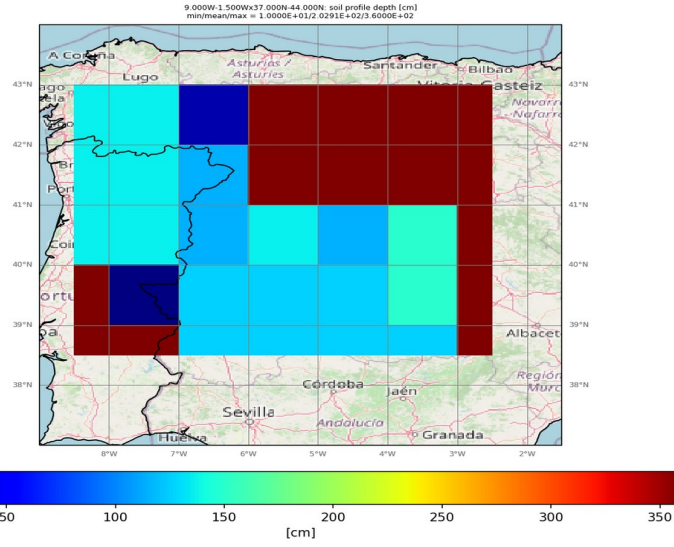
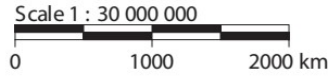
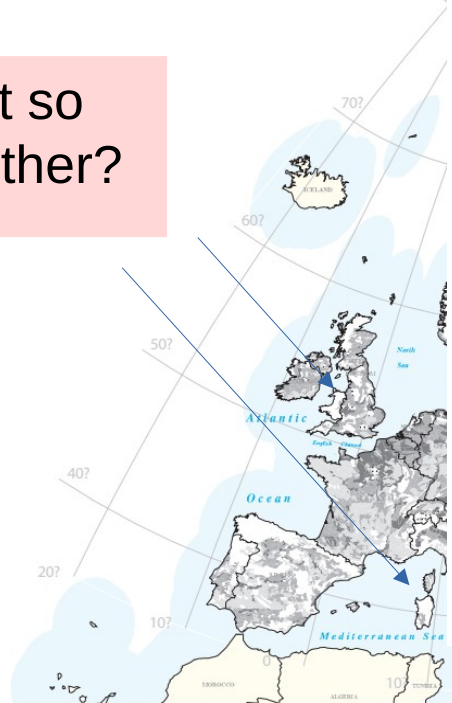
VERSION 4 beta, 25/09/2001 & PEDOTRANSFER RULES 2.0

Depth to rock.

% OF MAP:	Depth to rock: (Attribute DR):
22 %	Shallow (< 40 cm)
15 %	Moderate (40 - 80 cm)
49 %	Deep (80 - 120 cm)
16 %	Very deep (> 120 cm)
	Non soils



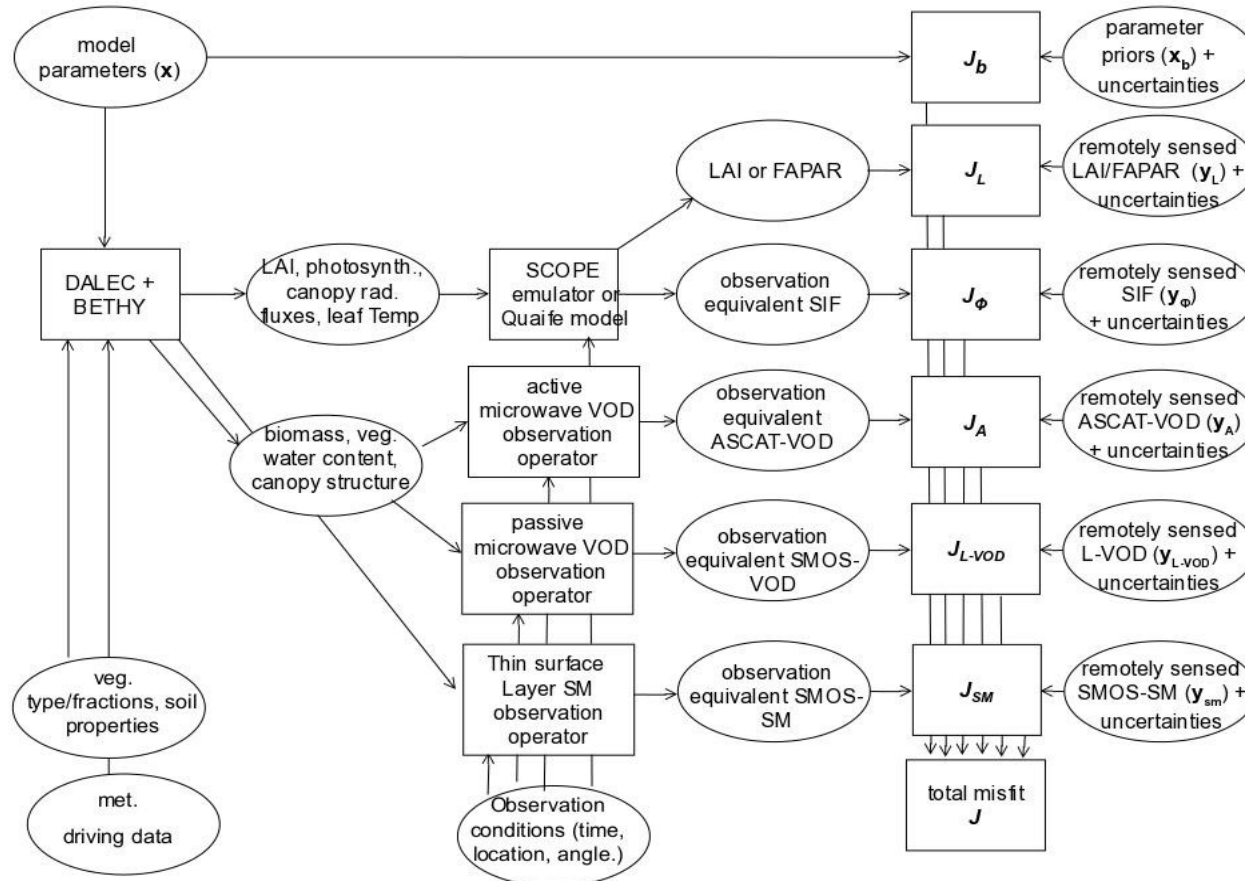
Maybe not so realistic either?



Rule number: 411 (attribute DR).
 Last rule update: 01/08/1996
 Last rule inference: 31/07/2002
 Plot date: 16/01/2004



Observation operators and data assimilation (on the swath)

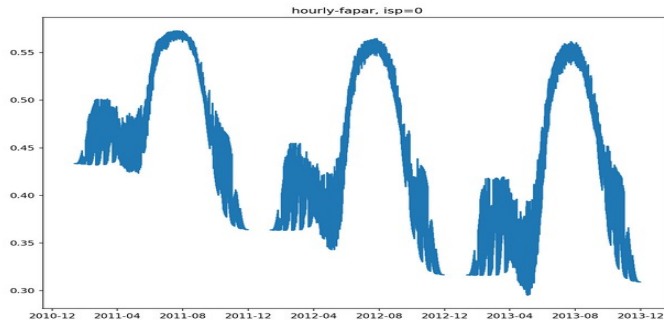


Observation Operators

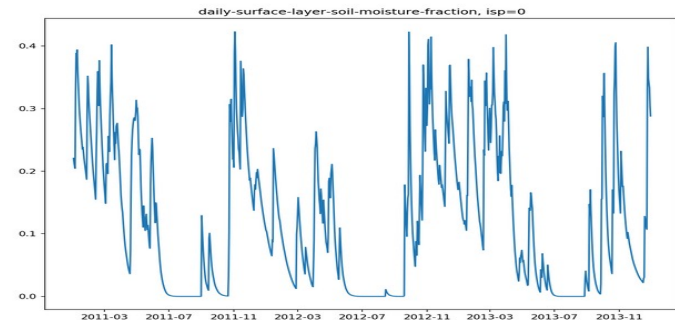
Inclusion of observation operators in the data assimilation framework for:

- FAPAR (Sellers 2-stream model)
- Surface layer soil moisture (1L-VIC)
- SIF (L2SM: embeds Gu et al. (2019) source into Sellers 2-stream model)
- Active/passive microwave VOD (empirical approach + physical approach of Schwank et al. (2021))

FAPAR at Sodankyla



SM at Majadas



VOD – empirical approach

Starting point: $VOD_{\lambda, \text{PFT}}(t) = g_{\lambda}(T) * f_{\lambda}(B_w, h_s, B_l, h_f)$

where

- f_{λ} is a function specific to the respective sensor (wavelength λ) and (group of) PFT
- $g_{\lambda}(T)$ specifies temperature dependence (motivated by Schwank et al., 2021)

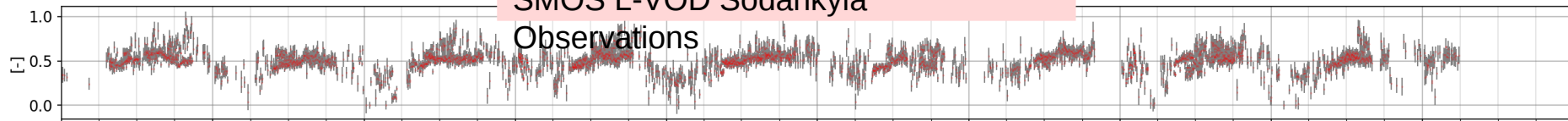
VOD for PFT mix, with fc denoting PFT fractional cover in satellite footprint:

$$e^{-\text{VOD}} = fc(\text{PFT1}) e^{-\text{VOD}(\text{PFT1})} + fc(\text{PFT2}) e^{-\text{VOD}(\text{PFT2})} + \dots$$

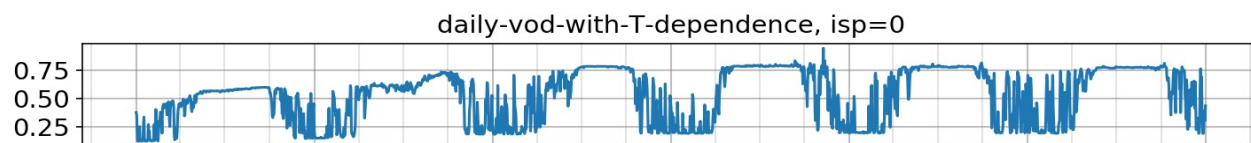
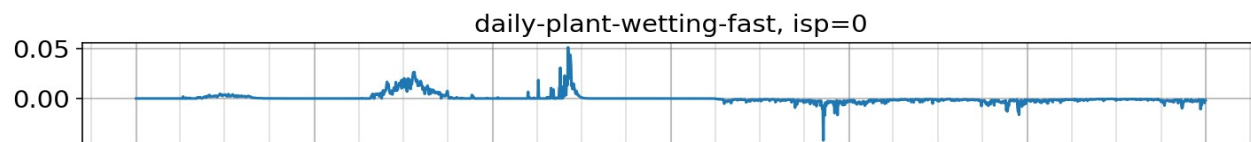
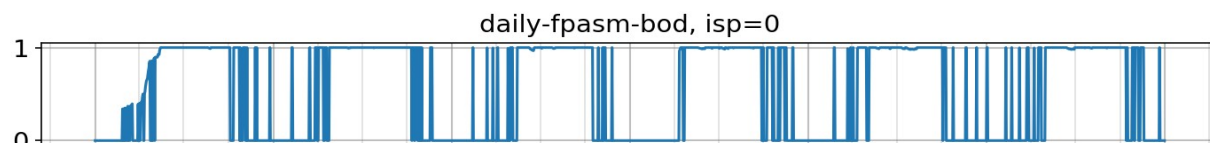
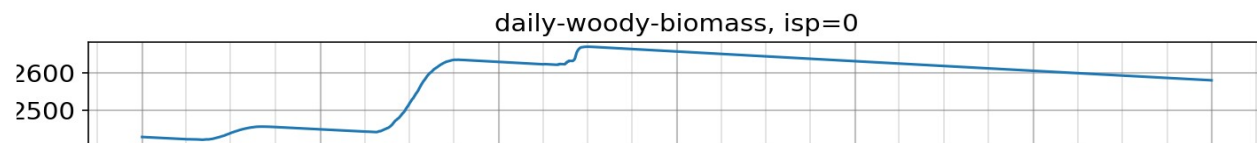
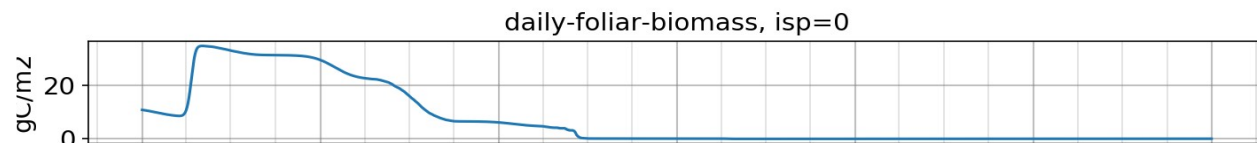
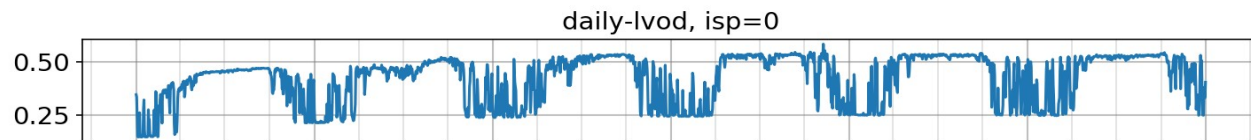
$h_{f/s}$ are measures of the plants' hydrological status, for fast and slow changes approximated by actual over potential canopy evapotranspiration and plant available soil moisture in the root zone, respectively.

$B_{w,l}$ are the plants' wood and leaf biomass pools, respectively.

SMOS L-VOD Sodankylä



Sodankylä PFT Mix Posterior



First assimilation experiments:

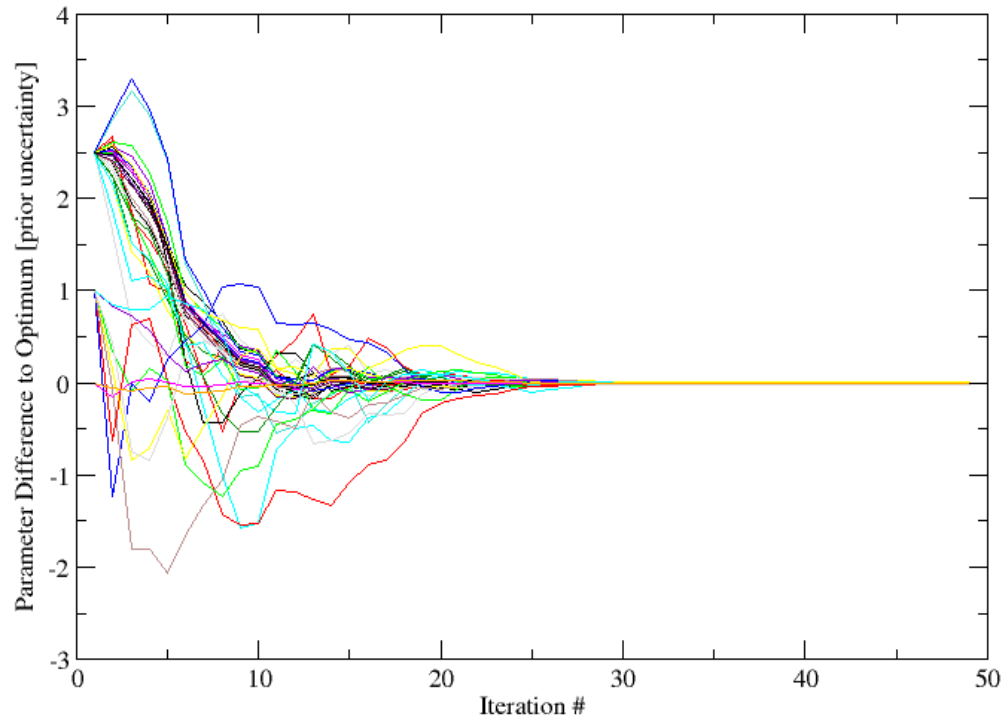
- 48 Parameters for model, 10 for L-VOD observation operator
- L-VOD constrains carbon pools
- This solution to the inverse problem is not realistic
- Further constraints (complementary data streams) will be helpful
- Longer spin-up will be helpful
- And the spatial variability ...
- To check that it works at the technical level we go one step back and look at identical twin experiments

Sodankylä Tree Posterior

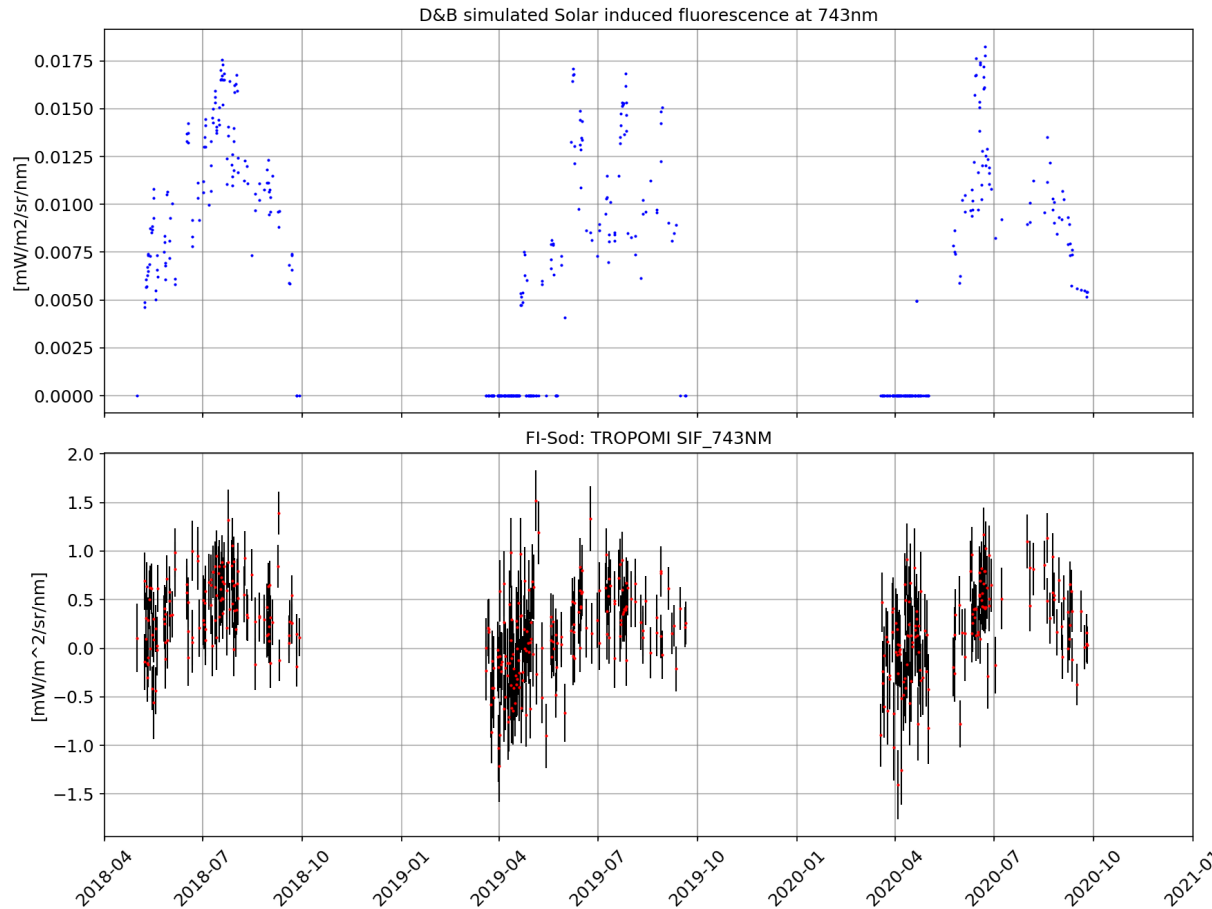
VOD – identical twin experiment

Assimilation of L-VOD, Twin Experiment 2015-2017

Convergence of Parameter Difference to Optimum from 50% perturbation



SIF – comparison of simulations against observations at Sodankylä



Modelled SIF for TROPOMI footprint

TROPOMI

Summary D&B Model

DALEC & BETHY model:

- developed for simulation and assimilation of EO and field data
- to provide an integrated perspective on terrestrial carbon and water cycles
- includes observation operators “on the swath” for a diverse array of observations
- includes tangent and adjoint codes for efficient data assimilation (system needs to be applicable at high spatial resolution)
- to be released to public domain as community model for use by larger group beyond the LCC team

Working in the LCC team, which combines experts in field work, remote sensing, modelling, and data assimilation is **CHALLENGING, FRUITFUL**, and **FUN**, much more than working isolated within the respective communities

Thank you!
More to come soon...



FINNISH METEOROLOGICAL INSTITUTE



iLab

TU Delft

Delft University of Technology



VNIVERSITAT ID VALÈNCIA



University of
Reading



WSL



JÜLICH
Forschungszentrum



Max Planck Institute
for Biogeochemistry



THE UNIVERSITY
OF EDINBURGH



CESBIO



TU
WIEN

